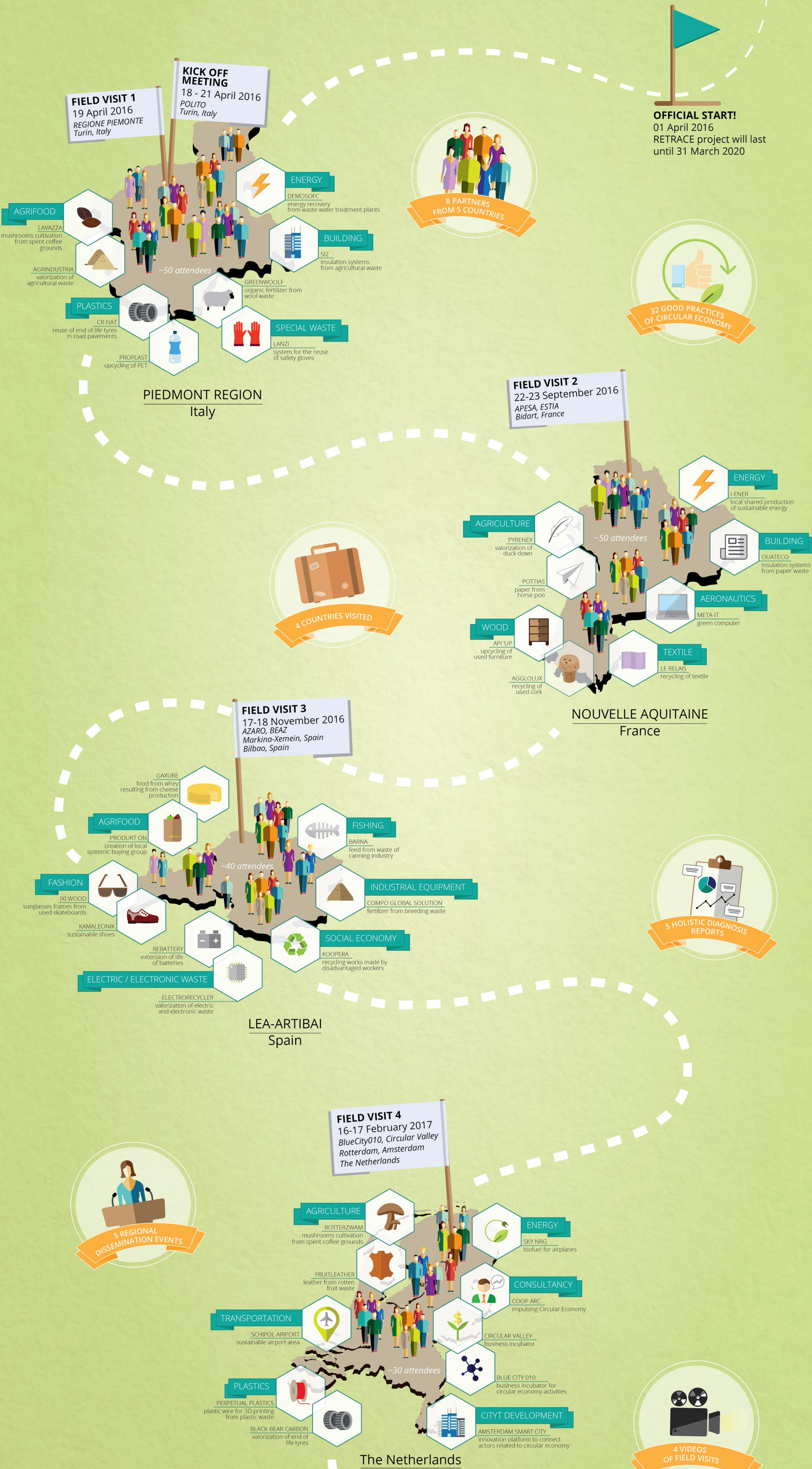


1 year of RETRACE

Interreg Europe

RETRACE - A Systemic Approach for Regions Transitioning towards a Circular Economy aims at promoting systemic design as a method allowing local and regional policies move towards a circular economy when waste from one productive process becomes input in another, preventing waste from being released into the environment



follow the journey on

www.interregeurope.eu/retrace

YouTube #retrace #interregeurope

Project partners



Credits

Graphic design: Agnese Pallares, Carolina Galindo Nohes, Chica Borrell, Icons by: bassdrum, Curve, Michael Thompson, Arregui Arregui, Frederic Jaffet, Benke Bierny, andrews, Guillem, Rogan Willy, Thomas Helbig, Coco Stadio Milano, Anselmi, Adrián Colgat, azarou.design, Sandra, Creative Staff, AlfredoCreatives.com, Adrien Coquet, Nicolas Menghini, Giselle Pereira, Adrien Coquet, andreu adalora, Edward Postman, Rogan Willy, Banna Bierny, Dillon Aude, H Alberto Gargallo, unfranco, Nasa Kozak, Creative Staff, Unrecoznat.ME